

digital
easy
faster

Plexus™



macro-Plexus™



micro-Plexus™



digital
easy
after

Plexus™

OVERVIEW

- **Description of Systems**
- **Primary System Features**
- **Key Telephones & Accessories**
- **Configuration**
- **Expansion**

Digital 2.0



BBS Telecom

MACRO PLEXUS CABINET DESCRIPTION

- Digital Backplane
- Universal Card-Slot Arrangement
 - 11 Total Card-Slots
- Voice and Data Bus
- Modular Power Supply
- Battery Backup with charger
- Link 2 Cabinets



MACRO PLEXUS CABINET DESCRIPTION continued

- Capacity of a Single Cabinet
 - 72 ports
 - 64 ports + 24 digital trunks when using a T-1 connection
 - 64 ports + 48 digital trunks when using 2 T-1 connections



MACRO PLEXUS CABINET DESCRIPTION continued

- Capacity of Two Cabinets Linked
 - 128 ports
 - 128 ports + 24 digital trunks when using a T-1 connection
 - 128 ports + 48 digital trunks when using 2 T-1 connections



Plexus™

CABINET DESCRIPTION

- 3 Models:
 - 4 x 8 with On-Board Integrated Voice Mail with Auto-Attendant (IVP)
 - 4 x 8 with On-Board 4 Channel Auto-Attendant (AAI)
 - 4 x 8 with no AAI or IVP
- 2 Expansion Slot
- Cabinet can be linked with an additional Micro Plexus cabinet.
- External Power Supply
 - Battery Backup w/ Charger



micro-Plexus™

CABINET DESCRIPTION cont...

- **Capacity of a Single Cabinet**
 - 36 ports (12 trunks x 24 extensions)
- **Capacity of Linked Cabinets**
 - 48 ports (16 trunks x 32 extensions)



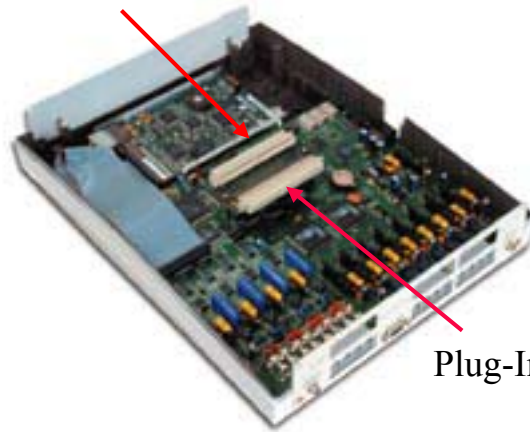
micro-Plexus™

digital
easy to
aster

Plexus™

CARD-SLOTS & PLUG-IN CONNECTORS

Plug-In Connector



Plug-In Connector



Card-Slots

Digital 2.0



BBS Telecom

digital
easy
faster

Plexus™

DIGITAL SWITCH PROCESSOR DXP

- **Macro Plexus: On DXP Card**
- **Micro Plexus: On Motherboard**
- **Features**
 - **Main Call Handling CPU**
 - **DSP Resources**
 - **External Paging Output**
 - **Music-On-Hold Input**
 - **RS-232 Serial Port**

Digital 2.0



BBS Telecom

PORT CARDS

- **Hybrid Extension Interface**
 - **8 Extensions**
 - **Supports Key Telephones, ordinary telephones, modems, fax machines, etc.**
- **Analog Trunk Interface (ATI)**
 - **4 or 8 Trunks**

PORT CARDS cont...

- **Analog Combination Interface (ACI)**
 - **4 Trunks and 8 Hybrid Extensions**
Micro-Plexus only
 - **Hybrid Extensions support Key Telephones, ordinary telephones, modems, fax machines, etc.**
- **Direct Inward Dial (DID) Analog Trunk Interface**
 - **4 Trunks**

PORT CARDS-DIGITAL

- **Digital Trunk Interface (DTI)**
 - 4 Port ISDN BRI Card
 - T-1 / E-1 CAS Card
 - ISDN PRI Card
- **Digital Extension Interface (DEI)**
 - 8 Digital Extensions

OPTIONAL CARDS

- **Integrated Voice Processor (IVP)**
 - **4 to 24 Channels**
 - **Full Menu Auto-Attendant**
 - **511 Voice Mailboxes**
 - **40+ Hours Recording Time**
- **Auto-Attendant Interface (AAI)**
 - **4 Independent Channels**
 - **Up to four 20-second greetings**
 - **10 dial-digit mappings**

OPTIONAL CARDS cont...

- **Inter-Unit Link Interface (ILI)**
 - **Provides signaling data which enables any two cabinets to cooperate as a single system.**

PRIMARY SYSTEM FEATURES

- **Hybrid Key / PBX System**
 - **Compatible with standard or key telephones and devices.**
 - i.e., faxes, modems, cordless telephones, adjunct voice-mail systems, and credit card readers.
- **Inter-operates with both analog & digital trunk interfaces from the Central Office.**

SYSTEM FEATURES cont...

- **Comprehensive Set of Key System and PBX Features**
 - Hold, Transfer, Conference, Call Intrusion, Pickup, Forwarding, etc.
- **Call Distribution - Basic ACD**
 - Groups, Agents, Call Queuing, Log in/out
 - Hunt Methods: linear, circular, least busy
- **Truly Integrated Voice Mail**
 - Includes Call Record & Live Call Screen (answering machine simulation)

digital
easy
faster

Plexus™

PVT-30D / PDT-30D KEY TELEPHONE DESCRIPTION

- LCD Display Phones
- Analog (PVT-30D) or Digital (PDT-30D)
- Caller ID Name & Number Storage
- 30 Button Speakerphone
- Programmable Keys
- Fixed Feature Keys



Digital 2.0



BBS Telecom

PVT-30D / PDT-30D KEY TELEPHONE FEATURES

- **Call Appearance/Loop Keys**
 - **Brokerage Feature**
- **Caller ID Display**
 - **30 Name and Number Storage**
 - **Call Waiting Indication**
 - **Transferred with Call**
- **Call Activity Screening**
 - **Indicates Status of Mapped Keys**

PVT-30D / PDT-30D KEY

TELEPHONE FEATURES cont...

- **Paging**
 - **Groups**
 - **Multiple Zones**
- **Programmable DSS/BLF Keys**
 - **Monitor Stations or Lines**
 - **One-button Access to Features & Functions**
 - **Speed Dial**

digital
easy
after

Plexus™

DSS-60 (Analog) / DDSS (Digital) OPERATOR CONSOLE



- **60 Programmable Keys**
 - **Monitor Stations or Lines**
 - **One-button Access to Features & Functions**
 - **Filter Keys for Hotel & Motel package**
- **Programmed through Host Key Telephone**

Digital 2.0




BBS Telecom

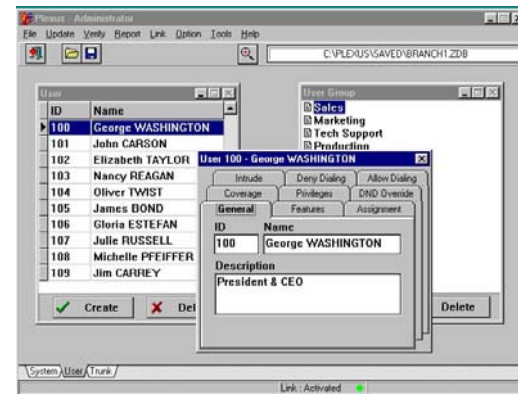
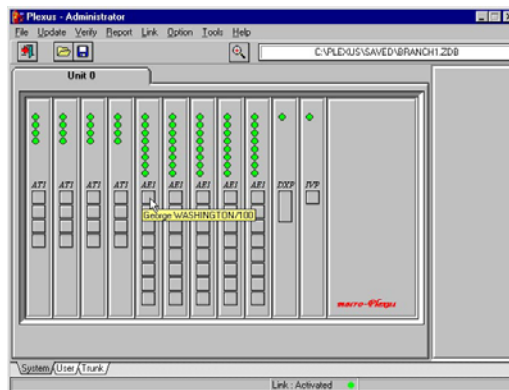
DF-100A DOOR PHONE

- **Intercom Device**
 - **Durable, Weather-Resistant**
 - **Single Illuminated Button**
 - **One-Touch Call Activation**
 - **Hands-Free Speakerphone**




SYSTEM CONFIGURATION

- Plexus Administrator 
 - Windows-Based Utility
 - Full GUI - Programs System, Voice Mail, and Phones
 - On- Line Help



SYSTEM MAINTENANCE

Upgrading the Plexus

- Plexus Administrator 
- XOS (Switch Operating System)
- VPS (Voice Processing System)
 - Expands from 4 to 24 ports via software



SYSTEM MAINTENANCE

Remote Configuration

- Remote Configuration Kit included with each Plexus system Promo Pack!
- Enables technical support direct from factory.
- All configuration and software changes can be administered remotely.

Plexus™

Plexus™

KEY TELEPHONE PROGRAMMING

- **Simple Display & Key Navigation**
- **On Screen Parameter Menu**
No Manual Needed



Digital 2.0



BBS Telecom

EXPANSION OPTIONS

- **Inter-Unit Link Interface (ILI)**
 - **Link up to 2 Macro Plexus cabinets**
 - **128 ports**
 - **128 ports + 24 digital trunks when using a T-1 connection**
 - **128 ports + 48 digital trunks when using 2 T-1 connections**
 - **Link up to 2 Micro Plexus cabinets**
 - **48 ports (16 trunks x 32 extensions)**